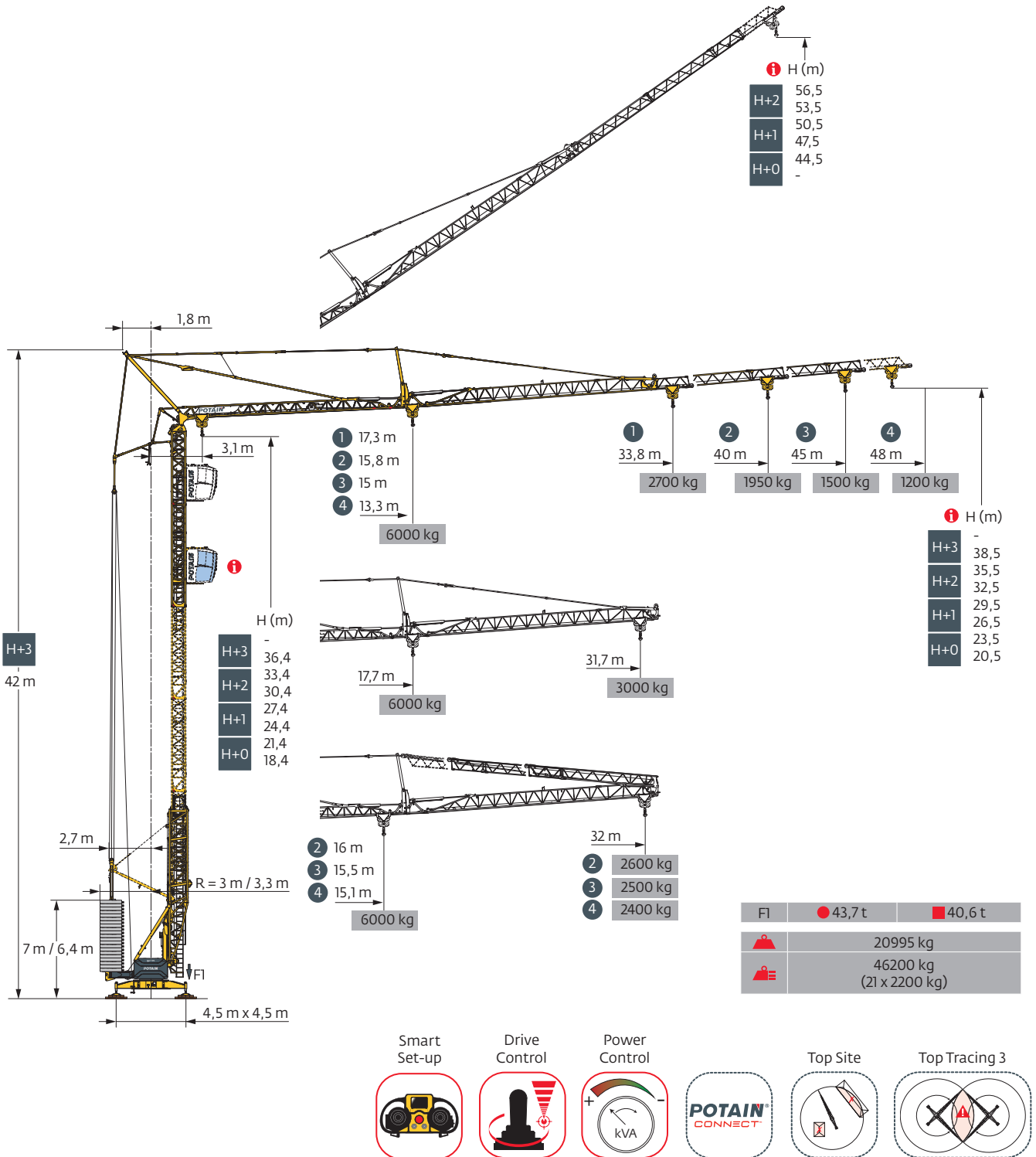
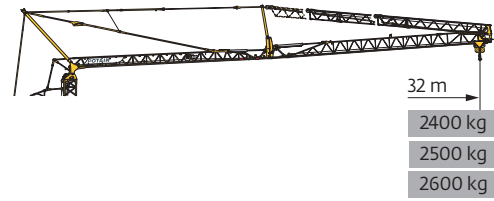
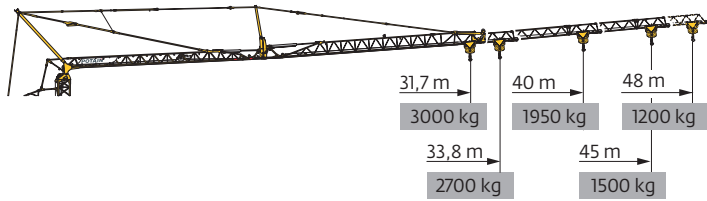


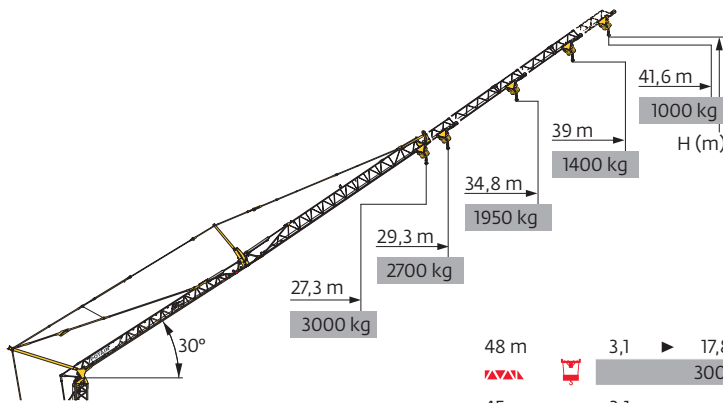
## Igo T 99



Courbes de charges / Lastkurven / Load curves / Curvas de cargas / Curve di carico  
Curvas de carga / Кривые нагрузок

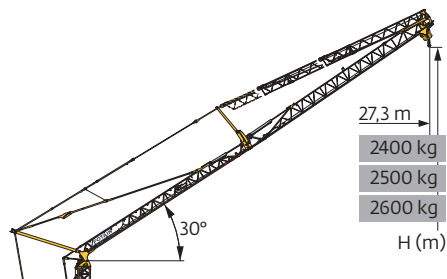


|        |     |   |      |      |      |      |      |      |      |      |      |      |      |      |      |      |      |      |      |      |      |    |
|--------|-----|---|------|------|------|------|------|------|------|------|------|------|------|------|------|------|------|------|------|------|------|----|
| 48 m   | 3,1 | ▶ | 13,3 | 14   | 16   | 18   | 20   | 22   | 24   | 26   | 28   | 30   | 32   | 34   | 36   | 38   | 40   | 42   | 44   | 46   | 48   | m  |
| ▲▲▲    | ▲▲▲ |   | 6000 | 5600 | 4800 | 4100 | 3600 | 3200 | 2900 | 2650 | 2400 | 2200 | 2050 | 1900 | 1750 | 1650 | 1550 | 1450 | 1350 | 1250 | 1200 | kg |
| 45 m   | 3,1 | ▶ | 15   | 16   | 18   | 20   | 22   | 24   | 26   | 28   | 30   | 32   | 34   | 36   | 38   | 40   | 42   | 44   | 45   |      |      | m  |
| ▲▲▲    | ▲▲▲ |   | 6000 | 5500 | 4800 | 4200 | 3700 | 3300 | 3000 | 2750 | 2500 | 2300 | 2150 | 2000 | 1850 | 1750 | 1650 | 1550 | 1500 |      |      | kg |
| 40 m   | 3,1 | ▶ | 15,8 | 16   | 18   | 20   | 22   | 24   | 26   | 28   | 30   | 32   | 34   | 36   | 38   | 40   |      |      |      |      |      | m  |
| ▲▲▲    | ▲▲▲ |   | 6000 | 5900 | 5100 | 4500 | 4000 | 3600 | 3300 | 3000 | 2800 | 2550 | 2400 | 2200 | 2100 | 1950 |      |      |      |      |      | kg |
| 33,8 m | 3,1 | ▶ | 17,3 | 18   | 20   | 22   | 24   | 26   | 28   | 30   | 32   | 33,8 |      |      |      |      |      |      |      |      |      | m  |
| ▲▲▲    | ▲▲▲ |   | 6000 | 5700 | 5100 | 4500 | 4100 | 3700 | 3400 | 3100 | 2900 | 2700 |      |      |      |      |      |      |      |      |      | kg |
| 31,7 m | 3,1 | ▶ | 17,7 | 18   | 20   | 22   | 24   | 26   | 28   | 30   | 31,7 |      |      |      |      |      |      |      |      |      |      | m  |
| ▲▲▲    | ▲▲▲ |   | 6000 | 5900 | 5200 | 4600 | 4200 | 3800 | 3500 | 3200 | 3000 |      |      |      |      |      |      |      |      |      |      | kg |
| 48 m   | 3,1 | ▶ | 15,1 | 16   | 18   | 20   | 22   | 24   | 26   | 28   | 30   | 32   |      |      |      |      |      |      |      |      |      | m  |
| ▲▲▲    | ▲▲▲ |   | 6000 | 5600 | 4800 | 4200 | 3800 | 3400 | 3100 | 2850 | 2600 | 2400 |      |      |      |      |      |      |      |      |      | kg |
| 45 m   | 3,1 | ▶ | 15,5 | 16   | 18   | 20   | 22   | 24   | 26   | 28   | 30   | 32   |      |      |      |      |      |      |      |      |      | m  |
| ▲▲▲    | ▲▲▲ |   | 6000 | 5800 | 5000 | 4400 | 3900 | 3500 | 3200 | 2950 | 2700 | 2500 |      |      |      |      |      |      |      |      |      | kg |
| 40 m   | 3,1 | ▶ | 16   | 18   | 20   | 22   | 24   | 26   | 28   | 30   | 32   |      |      |      |      |      |      |      |      |      |      | m  |
| ▲▲▲    | ▲▲▲ |   | 6000 | 5200 | 4600 | 4100 | 3700 | 3300 | 3100 | 2800 | 2600 |      |      |      |      |      |      |      |      |      |      | kg |



|       |      |      |      |      |        |        |
|-------|------|------|------|------|--------|--------|
| ▲▲▲   |      | 48 m | 45 m | 40 m | 33,8 m | 31,7 m |
| H (m) | H+2  | 56,5 | 55   | 52,5 | -      | -      |
|       |      | 53,5 | 52   | 49,5 | -      | -      |
|       | H+1  | 50,5 | 49   | 46,5 | 43,4   | 42,2   |
|       |      | 47,5 | 46   | 43,5 | 40,4   | 39,2   |
| H+0   | 44,5 | 43   | 40,5 | 37,4 | 36,2   |        |
|       |      | -    | -    | -    | -      | -      |




|        |     |   |      |      |      |      |      |      |      |      |      |      |      |      |      |    |
|--------|-----|---|------|------|------|------|------|------|------|------|------|------|------|------|------|----|
| 48 m   | 3,1 | ▶ | 17,8 | 20   | 22   | 24   | 26   | 28   | 30   | 32   | 34   | 36   | 38   | 40   | 41,6 | m  |
| ▲▲▲    | ▲▲▲ |   | 3000 | 2600 | 2300 | 2050 | 1850 | 1700 | 1550 | 1450 | 1300 | 1200 | 1150 | 1050 | 1000 | kg |
| 45 m   | 3,1 | ▶ | 21,2 | 22   | 24   | 26   | 28   | 30   | 32   | 34   | 36   | 38   | 39   |      |      | m  |
| ▲▲▲    | ▲▲▲ |   | 3000 | 2850 | 2600 | 2350 | 2150 | 1950 | 1800 | 1650 | 1550 | 1450 | 1400 |      |      | kg |
| 40 m   | 3,1 | ▶ | 24,5 | 26   | 28   | 30   | 32   | 34,8 |      |      |      |      |      |      |      | m  |
| ▲▲▲    | ▲▲▲ |   | 3000 | 2800 | 2550 | 2350 | 2150 | 1950 |      |      |      |      |      |      |      | kg |
| 33,8 m | 3,1 | ▶ | 27   | 28   | 29,3 |      |      |      |      |      |      |      |      |      |      | m  |
| ▲▲▲    | ▲▲▲ |   | 3000 | 2850 | 2700 |      |      |      |      |      |      |      |      |      |      | kg |
| 31,7 m | 3,1 | ▶ | 27,3 |      |      |      |      |      |      |      |      |      |      |      |      | m  |
| ▲▲▲    | ▲▲▲ |   | 3000 |      |      |      |      |      |      |      |      |      |      |      |      | kg |



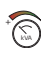




|      |     |   |      |      |      |      |    |
|------|-----|---|------|------|------|------|----|
| 48 m | 3,1 | ▶ | 22,7 | 24   | 26   | 27,3 | m  |
| ▲▲▲  | ▲▲▲ |   | 3000 | 2800 | 2550 | 2400 | kg |
| 45 m | 3,1 | ▶ | 23,5 | 24   | 26   | 27,3 | m  |
| ▲▲▲  | ▲▲▲ |   | 3000 | 2900 | 2650 | 2500 | kg |
| 40 m | 3,1 | ▶ | 24,3 | 26   | 27,3 | m    |    |
| ▲▲▲  | ▲▲▲ |   | 3000 | 2750 | 2600 | kg   |    |

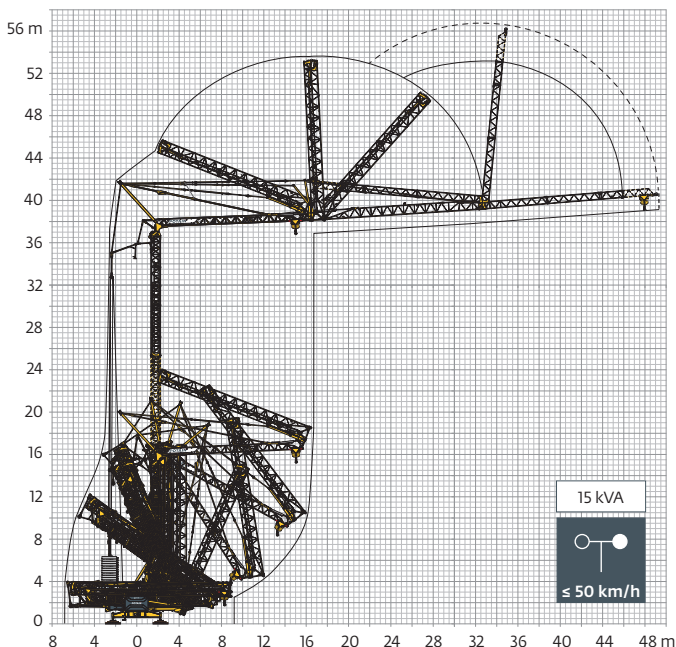
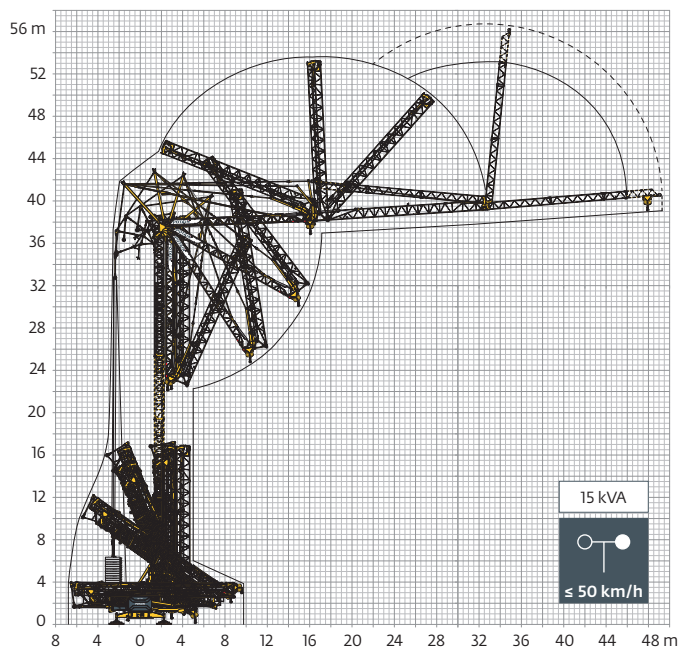
|       |     |      |      |      |
|-------|-----|------|------|------|
| ▲▲▲   |     | 48 m | 45 m | 40 m |
| H (m) | H+1 | 42,2 |      |      |
|       |     | 39,2 |      |      |
|       | H+0 | 36,2 |      |      |
|       |     | -    |      |      |

Mécanismes / Triebwerke / Mechanisms / Mecanismos / Meccanismi  
 Mecanismos / Механизмы

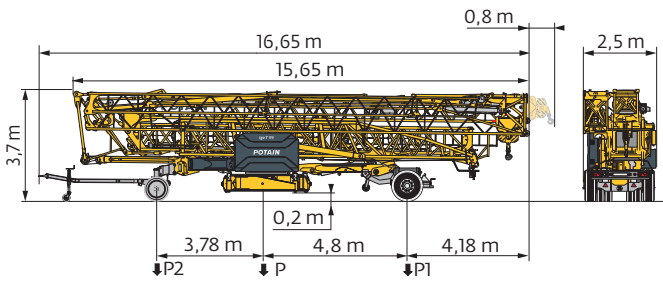
| 400 V - 50 Hz<br>480 V - 60 Hz  |                       |                        |         |      |      |      | ch - PS<br>hp | kW      |       |
|---|-----------------------|------------------------|---------|------|------|------|---------------|---------|-------|
|  | <b>25 HPL™ 15</b>     | m/min                  | 2,1     | 16   | 30   | 46   | 54            | 25      | 19    |
|   |                       | kg                     | 6000    | 6000 | 3000 | 1500 | 1200          |         |       |
|  | <b>5 DVF 5 Optima</b> | m/min                  | 14,7    | 39   | 55   | 70   |               | 5,5     | 4     |
|   |                       | kg                     | 6000    | 6000 | 2000 | 200  |               |         |       |
|  | <b>HPS 152</b>        | tr/min<br>U/min<br>rpm | 0 → 0,8 |      |      |      |               | 2 x 5,5 | 2 x 4 |

|  IEC 60204-32 |  kVA  |  |
|--|--|---|
| 400 V (+10% -10%) 50 Hz / 480 V (+6% -10%) 60 Hz   |  29 → 21 kVA<br> 34 → 24 kVA |   |

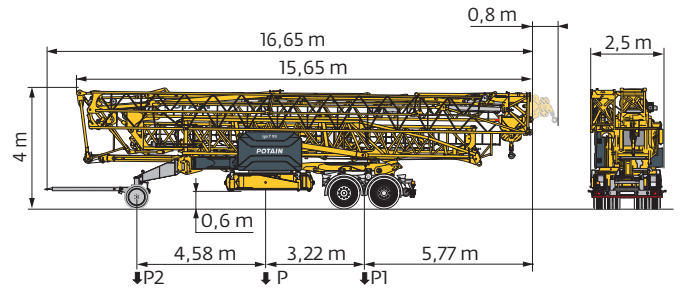
Montage / Montage / Erection / Montaje / Montaggio  
 Montagem / Монтаж



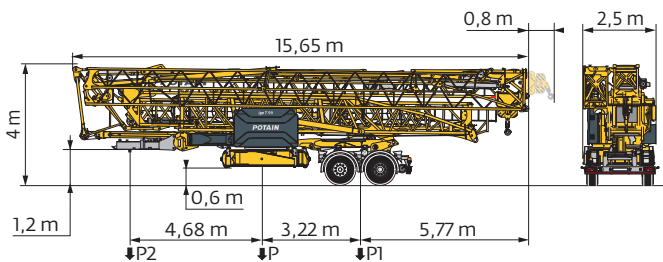
Transport / Transport / Transport / Transporte / Trasporto  
Transporte / Транспортировка



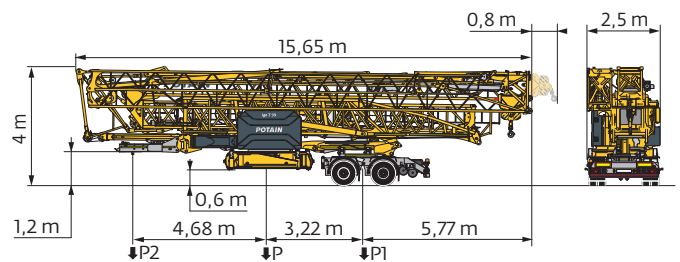
|             | km/h | P (kg) | P1 (kg) | P2 (kg) |
|-------------|------|--------|---------|---------|
| DJ126M/S125 | 25   | 22985  | 12000   | 10985   |



|              | km/h | P (kg) | P1 (kg) | P2 (kg) |
|--------------|------|--------|---------|---------|
| DJ126M/S215M | 25   | 24625  | 16825   | 7800    |



|             | km/h | P (kg) | P1 (kg) | P2 (kg) |
|-------------|------|--------|---------|---------|
| SL121/S215M | 25   | 24025  | 16910   | 7115    |



|                   | km/h | P (kg) | P1 (kg) | P2 (kg) |
|-------------------|------|--------|---------|---------|
| SL122/J215M (EBS) | 80   | 23945  | 16810   | 7135    |

RCE e2\*2007/46\*0493\*02 - WVTA e2\*2007/46\*0493\*02

**FR**

**DE**

**EN**

**ES**

**IT**

**PT**

**RU**

|  |   |  |   |   |   |  |  |
|--|---|--|---|---|---|--|--|
|  | Rayon de giration   | Schwenk radius   | Rear slewing radius   | Radio de giro   | Raggio di rotazione   | Raio de rotação  | Задний габарит   |
|  | Nous consulter  | Auf Anfrage  | Consult us  | Consultarnos  | Consultateci  | Consultar-nos  | Проконсультируйтесь у нас  |
|  | Réactions en service  | Reaktionskräfte in Betrieb   | Reactions in service  | Reacciones en servicio  | Reazioni in servizio  | Reacções em serviço  | Реакция при работе   |
|  | Réactions hors service  | Reaktionskräfte außer Betrieb  | Reactions out of service  | Reacciones fuera de servicio  | Reazioni fuori servizio   | Reacções fora de serviço   | Реакция в покое  |
|  | Poids à vide, sans lest, sans trains de transport, avec flèche maxi. et hauteur standard. | Gewicht ohne Last, ohne Ballast, ohne Transportachsen mit max. Auslager und Standardhöhe             | Weight without load, without ballast, without transport axes, with max. jib and standard height | Peso en vacío, sin lastre, sin trenes de transporte con flecha y altura estándar      | Peso a vuoto, senza zavorra, senza assali di trasporto, con braccio max e altezza standard. | Peso em vazio, sem lastro, sem eixos de transporte com lança máxima e altura standard. | Вес без груза, без балласта, без осей для транспортировки, с максимальным вылетом стрелы и стандартной высотой |
|  | Poids total du lest   | Ballast-Gesamtgewicht  | Total ballast weight  | Peso total del lastre   | Peso totale della zavorra   | Peso total do lastro   | Общий вес балласта   |
|  | Équipements standards   | Standardausrüstungen   | Standard equipment  | Equipamiento de serie   | Equipaggiamento standard  | Equipamento de série   | Стандартное оборудование   |
|  | Équipements optionnels  | Sonderausrüstungen   | Options   | Equipamiento opcional   | Equipaggiamento in opzione  | Equipamento opcional   | Дополнительное оборудование (опция)  |
|  | Levage  | Heben  | Hoisting  | Elevación   | Sollevamento  | Elevação   | Подъем   |
|  | Distribution  | Katzfahren   | Trolleying  | Distribución  | Distribuzione   | Distribuição   | Перемещение по стреле  |
|  | Orientation   | Schwenken  | Slewing   | Orientación   | Rotazione   | Rotação  | Поворот  |
|  | Puissance requise   | Erforderliche Leistung   | Required power  | Potencia Necesaria  | Potenza richiesta   | Potência Necessária  | Потребляемая мощность  |
|  | Fonction Power Control : vitesses treuils adaptées à la puissance disponible              | Funktion Power Control: Geschwindigkeiten der Triebwerke werden an die verfügbare Leistung angepasst | Power Control Function: winch speeds adapted to the available power                             | Función Power Control: marchas de los cabrestantes adaptadas a la potencia disponible | Funzione Power Control: velocità degli organi adattate alla potenza disponibile             | Função Power Control: velocidades de guincho adaptadas à potência disponível           | Функция контроля мощности Power Control: регулировка скорости лебедок в зависимости от доступной мощности      |

|  |  |  |   |  |  |   |  |
|--|--|--|---|--|--|---|--|
|  | Hauteurs sous crochet données moufle plaquée                           | Hakenhöhen werden mit plattiertem Haken angegeben                  | Hook heights given with plated pulley block                                   | Altura bajo gancho con pasteca bloqueada                           | Altezza sotto gancio con bozzello in contatto con carrello                 | Altura ao gancho com o cadernal em contacto com o carrinho                        | высота под крюком дана при условии, что крюковая подвеска соприкасается с кареткой |
|  | Document commercial non contractuel                                    | Unverbindliches Vertriebsdokument                                  | This commercial document is not legally binding                               | Documento comercial no contractual                                 | Documento commerciale non vincolante                                       | Documento comercial não contratual  | Этот коммерческий документ не является юридически обязательным                     |
|  | Pour toute information technique se référer à la notice correspondante | Für technische Informationen, siehe die entsprechenden Anweisungen | For any technical information, please refer to the corresponding instructions | Para cualquier información técnica, ver la noticia correspondiente | Per tutte le informazioni tecniche fare riferimento al catalogo istruzioni | Para qualquer informação técnica complementar consultar as respectivas instruções | Для получения технической информации, см. соответствующие инструкции               |

